



Shenzhen Linsy Aluminum

Shenzhen Linsy Aluminum Co., limited is a leading supplier of aluminum processing products that find extensive application in aerospace/high strength, general engineering, automotive, and various other bespoke industrial sectors.

Email: david@linsyaluminum.com

Mobile/Whatsapp: +86 181 2470 3776

Add: Floor 7, Xinan Commercial Building, Shenzhen City, China, 518101

Dongguan Factory address: Building B, No.1, Zhenan Road, Changan County, Dongguan city, Guangdong Province, China, 523850



CONTENT

- 01 Company**
Linsy Aluminum is a renowned manufacturer of aluminum products specifically designed for aero-space/high strength, general engineering, automotive and custom applications....
- 02 Certifications**
The company upholds the principle of technological innovation and consistently introduces state-of-the-art production equipment from both domestic and international sources...
- 03 Production equipment**
Suzhou Xinchangguang has manufactured a hydraulic tilting gas heating furnace designed by Otto Junker, which is equipped with ABB technology....
- 04 Technical inspection**
Linsy Aluminum is equipped with a range of advanced testing equipment that possesses the capability to conduct tests on product size, composition, and more...
- 05 Product list**
We have a wide range of aluminum products available, including plates, sheets, extrusions, rods, bars, tubes, forge stock, and wire....
- 06 Global Business Partners**
Linsy Aluminum is a renowned manufacturer of aluminum products that are fabricated specifically for aerospace and high-strength applications, as well as general engineering and automotive industries...



Company Profile

Linsy Aluminum Co., limited is a reputable provider of aluminum processing products. These products are extensively utilized in various industries such as aerospace/high strength, general engineering, automotive, and other customized industrial applications. Our team of engineers, designers, metallurgical experts, and sales staff collaborate closely with customers to develop creative solutions that cater to their specific requirements. Our range of aluminum products includes sheet and foil, profiles, wires, bars, pipes, forgings, and aluminum wires.

The aluminum sheet, strip, and foil factory is located in Changan County, Dongguan City. It covers an area of approximately 300,000 square meters and employs over 500 workers. Our factory is at the forefront of similar enterprises nationwide in terms of comprehensive competitiveness.

We are renowned for being the top suppliers of high-grade alumina alloy cold-rolled strips, as well as offering stable quality bottle caps. Additionally, we are known for our production base of cold-rolled aluminum alloy in the 1 and 3 series, as well as the 5 series.



To enhance our capabilities further, our company has invested 1 billion yuan in a high-precision aluminum foil project. Construction began in June 2002, trial production concluded at the end of 2003, and it was completed in March 2005. Currently, we have an annual production capacity of 100,000 tons of high-precision aluminum foil.

Our primary product range includes hot 8011 bottle capping materials, aluminum foil from the 8 series, sheet coils from the 5 series, as well as aluminum sheets for anodic oxidation. These products find wide applications across various industries such as aviation, automobile manufacturing, architectural decoration, household appliances, packaging, electronic circuits, and more.



The factory for high-precision and state-of-the-art aluminum sheets and industrial aluminum profiles is located in Dongguan City, Guangdong Province. The factory's primary output consists of sheets, strips, foils, pipes, bars, profiles, wires, forgings, and other products made from aluminium, magnesium, and their alloys.

These products find extensive applications in various industries such as aerospace, weapons manufacturing, shipbuilding, petrochemicals, transportation, electronics manufacturing, and others. Additionally, the factory exports its products to Europe as well as other countries and regions including the United States, Japan, South Korea, and South Asia.

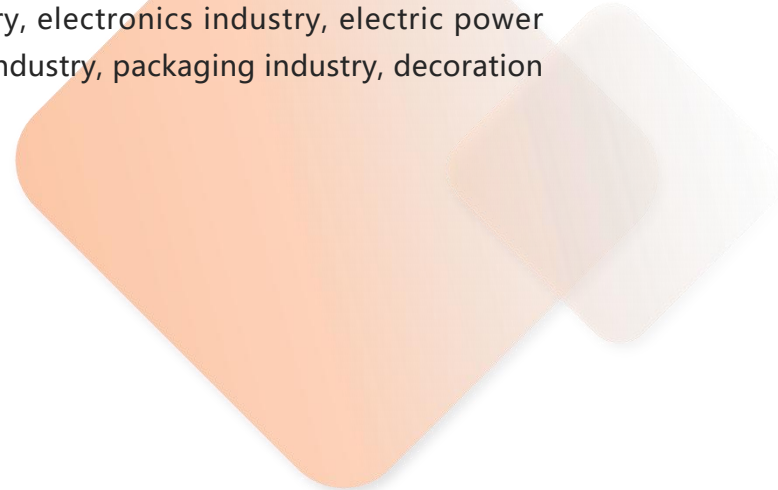
In the 25 years since its establishment, the company has created many first in the history of aluminium processing in China. It has provided a large number of light alloy materials for the key projects of the spacecraft, and has made important contributions to the start and development of aerospace in China, as well as to national defense and military construction.





The Industrial Aluminum Profile Factory is also located in Dongguan City, Guangdong Province as well. Its primary focus is on the production of high-quality aluminium and aluminium alloy tubes, rods, and other similar items.

These products find extensive application in various industries including aviation, aerospace, weapons manufacturing, nuclear industry, national defense science and technology, transportation, machinery manufacturing, instrument and instrument production, household appliances manufacturing, chemical industry, electronics industry, electric power generation sector, construction industry, packaging industry, decoration industry and many others.



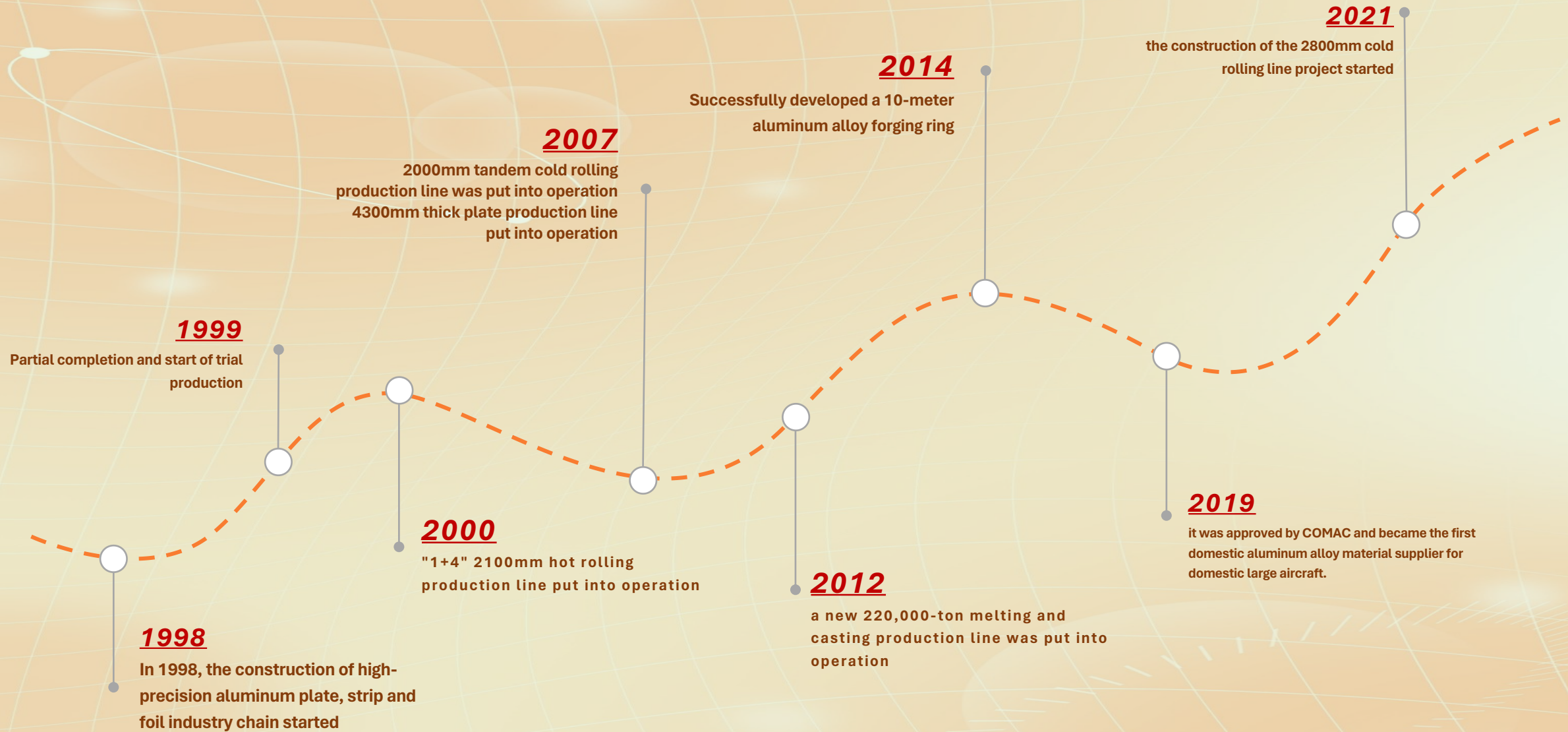


To cater to the unique requirements of the industry and military sectors, the factory has made significant investments in setting up a specialized production line for extruding aluminum alloy materials. This production line has been successfully constructed and is currently operational.

As a result, the factory now serves as a highly secure facility for producing national defense materials, playing a crucial role within the country. Furthermore, it offers a strong foundation to facilitate scientific research as well as the progress and manufacture of military goods.



The Aluminum Forging Products Factory in Dongguan specializes in various products such as die forgings, free forging, die casting, super-alloy, among others. Over the course of 25 years, our factory has undergone significant construction and growth, positioning itself as one of China's prominent aluminum processing enterprises. It serves as a pivotal source of raw materials for China's aerospace and national defense industries.





Certification

The company follows the principle of technological advancement, consistently integrating state-of-the-art production equipment from both domestic and international sources.

It pioneers new production techniques and recruits top-notch professionals while actively promoting information technology and refined management practices.

The company has successfully obtained certifications for quality management (**ISO 9001:2008**), environmental management (**ISO 14001:2004**), and occupational health and safety management (**OHSAS 18001:2007**).





Production equipment

2400mm width Hot Roughing Mill + double coiler hot finishing mill unit 1 set;
2400mm single stand double coiler 1 unit;
2050mm cold rolling machine 3 sets;
2300mm cold rolling mill (imported equipment) 1 set;
2000mm cold rolling mill 1 set;
1850mm cold rolling mill 1 set;
1450mm cold rolling mill 1 set;
1400mm cold rolling mill 1 set;
2000mm aluminum foil mill 4 sets,
50 thousand tons of casting production line.



2560mm “1+4” hot tandem rolling mill



The company has constructed a hydraulic tilting gas heating furnace that was designed by Otto Junker and manufactured by Suzhou Xinchangguang. This furnace is equipped with an ABB electromagnetic stirring system, as well as online hydrogen and slag measurement systems.

Additionally, the company has acquired Japan's most advanced high-precision milling machine, a German SMS 2500mm double-stand CVC cold rolling mill, and accompanying German Danieli 2300mm trimmer and slitting machine. Other equipment includes a German Engel straightening machine, a German Hercules grinder, a South Korean Pohang Steel Packaging Line, and a German Vollert High-bay Warehouse.



2 thin plate cross-cutting machine production lines



Hydraulic tilting gas heating furnace



The French Sermas double-head sawing machine



Stretch-bending straightening units



Finishing mill

Furthermore, the company has introduced four stretch-bending straightening units capable of straightening various alloy strips from the 1xxx series, 3xxx series, 5xxx series, and 8xxx series. In addition to this, there are two aluminum sheet stretching machines.

The company has also imported a plate polishing and coating production line from Swiss company Demis. Lastly, there are two thin plate cross-cutting machine production lines. With this extensive range of equipment and machinery, the company is able to effectively cater to the diverse requirements of customers seeking high-quality aluminum materials.



100MN oil hand forging press



5000mm radial and axial CNC ring rolling machine



300MN vertical hydraulic die forging press



12500 ton horizontal extruder



2500 ton indirect extrusion press



8000 ton extrusion press



2000 mm coating production line



1600 mm color coating unit



— Technical inspection



German OBLF-QSN750-2 spectrometer



Stereo microscope analysis low magnification



Digital Bridge Resistivity Meter



Low power inspection of ingot



Flaw inspection on ingot



DCX- III Electromagnetic Line Voltage Tester



Imported infrared spectrometer to analyze oil



Rough roll mill exit IMS crown tester



Surface Quality Inspection of Hot Rolled Coils



HEJ-IV Softening Breakdown Testers



Anodized surface inspection of hot rolled plates



1. Aluminum and its alloy plates & sheets

Variety	Alloy	Temper	Dimension(mm)			Executive Standard
			Thickness	Width	Length	
Non-heat treatable plates and sheets	Series 1, 3, 8	O, F, H111, H112, H12, H14, H16, H18, H19, H22, H24, H26	0.2~0.5	500~1500	500~4000	YS/T91 GB/T3880 ASTM B209 ASME SB-209 EN 485
			0.6~4.0	1000~2650	2000~10000	
			4.1~12.0 12.1~20 21~200	1000~2650 1000~3800 1000~3800	2000~20000	
	Series 5	O, F, H111, H112, H12, H14, H16, H18, H19, H22, H24, H26, H28, H32, H34, H36, H38, H116, H321	0.2~0.5 0.6~4.0	1000~1500 1000~2650	2000~10000	GB/T3880 GJB1541 GJB2662 ASTMB209 ASME SB-209 EN485 ASTMB928M
4.1~12.0 12.1~20 21~200			1000~2650 1000~3800 1000~3800	2000~20000		
Heat-treatable	Series 2, 6, 7	O, F, H111, H112, T3, T4, T6, T7	0.3~0.7 0.8~2.0 2.1~12.0	1000~1500 1000~2650 1000~2650	2000~10000	GB/T3880 GJB1541 GB/n167 GJB2053 GJB2662 ASTM B209 ASME SB-209 EN 485
			12.1~20 21~200	1000~3800 1000~3800	2000~20000	
		T351, T451, T651, T851, T7451, T74, T87, C10SYU	5.0~12.0	1000~2650	2000~10000	GB1741 Q/SWA10204
			12.1~20 21~200	1000~3800 1000~3800	2000~20000	
Aluminum brazing sheet	4343/3003 4343/3003/7072 4343/3003/4343 4045/3003/4045 4104/3003/4104 4004/3003/4004	O, H24	0.5~4.0	1000~1600	200~10000	YS/T69 ASME SFA-5.8
Tread plates	Series 1, 3, 5, 6	O, H22, H24, H26	Base plate thickness 1.0~6.0	1000~2650	2000~10000	GB/T3618 Q/EL432 EN 1386
Curtain walls	Series 1, 3 and 5005, 5052	O, H14, H24	1.5~4.0	914~2650	1500~5500	YS/T429.1 EL/X282
Automobile plates(Structures and panels)	Series 1, 2, 3, 5, 6, 7	O, H111, H14, H16, H18, H24, H26, H32, T4P, T4	0.3~4.0	900~2650	500~12000	GB/T33227



2. Aluminum and its alloy strips & coils

Variety	Alloy	Temper	Dimension(mm)		Executive Standard
			Thickness	Width	
Hot-rolled coils	Series 1、 3、 5、 6、 8	O、 F、 H112	2.0~6.0	900~2650	GB/T16501 Q/CHINALCOA2.1 ASTM B209 ASME SB-209 EN 485
Foil stocks	1235	H14	0.25~0.50	740~1700	Q/CHINALCO A2.13 YS/T457
Coated substrates	Series 1、 3、 5	H14、 H16、 H18、 H22、 H24、 H26	0.18~1.00	1000~1580	Q/SWAJ6004 YS/T432
Curtain wall coils	1100、 3003	H12、 H22、 H24、 H26	1.5~3.0	1000~2650	Q/CHINALCOA2.15
	5005、 5052	H22、 H24、 H32、 H34			
PS coils	1050、 1A25	H18	0.14~0.28	650~1700	YS/T421
Can stocks	3104	H19	0.25~0.5	780~1820	YS/T435
Ceilings	Series 1、 3	H14、 H24、 H16、 H26	0.4~1.0	200~1580	X/SWA21211 Q/SWAJ6051
	5005、 5052	H24、 H22			
Bottle lids	8011、 3105	H14、 H16、 H18	0.20~0.30	500~1700	YS/T91 Q/CHINALCO
Al plastic laminated tube coils	Series 1、 3、 8	O、 H22	0.2~1.5	30~1550	A2.8 YS/T434
Autotmobile strips & coils (Structures and panels)	Series 1、 2、 3、 5、 6、 7	O、 H111、 H14、 H16、 H18、 H24、 H26、 H32、 T4P、 T4	0.3~4.0	900~2650	GB/T33227
Other Coils	Series 1、 3、 8 and 5005、 5052	O、 H1x、 H2x	0.20~6.0	60~2650	GB/T8544 ASTM B209 ASME SB-209 EN 485
	Series 5	O、 H1x、 H2x、 H3x	0.3~4.0	900~2650	
	Series 6	O、 H18	0.5~4.0	900~2650	
Aluminum brazing coil strip	4343/3003 4343/3003/7072 4343/3003/4343 4045/3003/4045 4104/3003/4104 4004/3003/4004	O、 H14、 H16、 H18	0.06~4.0	10~1600	YS/T69 ASME SFA-5.8

Note: Coil inside diameter with 405、 505、 605mm are available, Max. outside diameter is 2450mm.



3. Aluminum and its alloy foils

Variety	Alloy	Temper	Dimension(mm)			Max.Outside Diameter	Executive Standard
			Thickness	Width	Inside Diameter		
Home appliance foils	8011、8111	O	0.01~0.02	200~700	76.2/150	450	GB/T3198
Cable foils	1050、1145	O	0.1~0.2	200~600	76.2	800	YS/T430
Medical foils	1235、8011、8021	H18、H19、O	0.012~0.06	300~600	76.2/150	600	GB3198
Fin stocks	1100、8011、3102	H22、H24、H26、H19	0.07~0.20	400~1310	150/200/505	1450	YS/T95.1
Double-zero foils	1235、8011	O	0.006~0.009	460~1320	76.2/150	450	GB3198 GB/T22642 GB/T22644 GB/T22647
Conversion foils	8011	O、H22、H24、H26、H18	0.012~0.06	300~1300	76.2	1300	GB3198
Electronic foils	1A99、1A97	H19	0.09~0.15	500~1000	76.2	1450	GB/T3615
	3003、3001		0.02~0.05				
PS sheets	1050	H18	0.14~0.15	600~1470	150/200	1200	YS/T421
Decorative foils	1100、3003	H18	0.026~0.15	1240~1400	150/200	1200	GB3198
Aluminum brazing foils	4343/3003 4343/3003/7072 4343/3003/4343 4104/3003/4104 4045/3003/4045 4004/3003/4004	O、H14、H16、H18、H24	0.07~0.15	10~50	150/200	1200	YS/T446
Capacitor foils	3104、5052、3003、8011	O、H24	0.05~0.145	200~1300	76.2/150	700	GB/T22649
Shutter foils	3104、5052、3E05	H19	0.12~0.20	20~1200	150/200/405/505	1400	YS/T621



4. Coated sheets and strips

Variety	Alloy	Temper	Dimension(mm)		Executive Standard
			Thickness	Width	
Colorcoated sheets & strips	1100、1200、3003、3105、3104、3004	H12、H14、H16、H18、H24、H26	0.20~2.0	500~2000	YS/T431
	5052、5754、5454、5005、5182、8011	H12、H22、H14、H24、H16、H26			
Can lids	5052、5182	H19、H48	0.20~0.30	100~1500	YS/T726
Bottle lids	8011、3105	H14、H16、H18	0.20~0.30	500~1560	
Can tabs	5182	H19、H48	0.279~0.45	60~1500	

Note:

1.Coil inside diameter is 300mm,350mm,405mm and 505mm. The max. outside diameter is 1700mm.

2.Length of coated sheets:500~4000mm



5. Medium and small sized extruded products (Extruding Plant)

5.1. Rods & bars

Variety	Alloy	Temper	Diameter or Distance Across Flats(mm)	Executive Standard
Ordinary rods & bars	Series 2、4、6、7	T1、T3、T3510、T3511、T4、T4510、T4511、T6、T6511	Rod diameter: 5~130; Tangent circle diameter of square-cornered bar and hexagonal bar, or distance across flats: 5~120	GB/T3191-2010、AMS-QQ-A-200B ASTM B221M、ASME SB-221
	Series 1、3、5、8	H112、O		
Military rods & bars	Series 3、5	R、M	Rod diameter: 5~130; Tangent circle diameter of square-cornered bar and hexagonal bar: 5~120	GJB2054、YMS1109 GJB2920、GJB3614
	Series 2、6、7	CZ、CS、O1、T3、T4、T6	Rod diameter: 5~130; Tangent circle diameter of square-cornered bar and hexagonal bar: 5~120	
		R	Rod diameter: ≤ 130; Tangent circle diameter of square-cornered bar and hexagonal bar: 5~120	
Marine rods & bars	Series 5	O、H112	Tangent circle diameter of square-cornered bar and hexagonal bar: ≤ 120	GB/T 26006-2010
	Series 6	O、T3511、T4、T5、T6、T8511	Rod diameter: ≤ 130; Tangent circle diameter of square-cornered bar and hexagonal bar: ≤ 120	

5.2. Industrial profiles

Variety	Alloy	Temper	Circumscribed Circle Diameter(mm)		Executive Standard
			Min.	Max.	
Industrial Profiles	Series 2、6、7	O、T1、T3、T3510、T3511、T4、T5、T6、T8510、T8511、T73、T73510、T73511、T76、T76510、T76511、T74511	10	320	GB/T6892、GJB2507A、AMS-QQ-A-200B ASTM B221M、ASME SB-221
	Series 1、3、5	H112、O	10	320	GB/T6892、GJB2507A AMS-QQ-A-200B、ASTM B221M、ASME SB-221



5. Medium and small sized extruded products (Extruding Plant)

5.3. Flat bars

Variety	Alloy	Temper	Thickness (mm)	Width (mm)	Executive Standard
Flat bars	Series 2、6、7	H112、T4、T6	5~100	8~320	YS/T439 YS/T689
	Series 1、3、5、8	H112	5~100	8~320	

5.4. Tubes

Variety	Alloy	Temper	Dimension(mm)		Executive Standard
			Diameter	Wall Thickness	
Thin tubes	Series 1、3、5	O、H14、H34、H32	6~120	0.5~5	GB/T6893 MS-QQ-A-200B ASTM B221M ASME SB-221
	Series 2、6、7	O、T4、T6	6~120	0.5~5	
Seamless thick tubes	Series 1、3、5、8	H112、O	20~180	5~40	GB/T4437.1 GJB2381 ASME SB-241 ASTM B241M
	2、6、7	H112、T4、T6、O	20~180	5~40	
Seamed thick tubes	Series 1、3、5	H112、O、F	15~225	1~40	GB/T4437.2 AMS-QQ-A-200B ASTM B221M ASME SB-221
	Series 2、6	F、O、H112 T4、T5、T6、	15~230	1~40	

5.5. Architectural profiles

Variety	Product Series	Alloy	Temper	Executive Standard
Ordinary doors & windows	98、90、85、76、50 42、38	6061、6063	T5、T6	GB5237
Heat insulated doors & windows	90、50、42、80			
Frame wall curtains	120、135、145、150、155			
Hidden frame wall curtains	110、130、150、160 170、210、220			



6.Large sized extruded products (Forging Plant)

6.1.Tubes

Variety	Alloy	Temper	Dimension(mm)		Executive Standard
			Diameter	Wall thickness	
Tubes	Series 1000、5A02、5A03、 5A05、5A06、3A21、 2A112A12、6A02、7A04、7A09	H112	120~400	10~40	GB/T4437.2 GB/T4437.1 ASME SB-241 ASTM B241M GJB2381
	2A11、2A12、6A02、5A06	O	120~280	10~35	
	2A11、2A12、6A02	T4	120~280	10~35	
	6A02、7A04、7A09	T6	120~280	10~35	

6.2.Rods & Bars

Variety	Alloy	Temper	Diameter(mm)	Executive Standard
Rods & bars	Series 1~7	H112、 F	50~400	GB/T3191 AMS-QQ-A-200B ASTM B221M ASME SB-221 GJB2504 GJB2920 GJB3539
	Series 1、 3、 5、 8	O	50~150	
	2A11、 2A12、 2A13、 6061	T4	50~150	
	Series 2、 4、 6、 7	T6	50~150	



6.Large sized extruded products (Forging Plant)

6.3.Profiles

Variety	Alloy	Temper	Circumscribed Circle Diameter(mm)		Executive Standard
			Min.	Max.	
Industrial profiles	Series 1、 2、 5、 6、 7	H112	100	530	GBn222 AMS-QQ-A-200B ASTM B221M ASME SB-221 GB/T6892
	Series 1、 2、 5、 7	O	100	530	
	2A06、 2A11、 2A12、 2A50、 6061	T4	100	530	
	Series 2、 6、 7	T6	100	530	

6.4.Flat bars

Variety	Alloy	Temper	Thickness(mm)	Width(mm)	Executive Standard
Flat bars	Series 1、 2、 3、 5、 6、 7、 8	H112	≥ 15	≤ 550	YS/T439 YS/T689
	2A11、 2A12、 2017、 2024	T4	≥ 20	≤ 550	
	Series 2、 6、 7	T6	≥ 20	≤ 550	



7. Die forging products

Variety	Alloy	Projected Area (m ²) or Weight(kg)	Temper	Executive Standard
Hand forgings	Series 5	≤ 10000kg	F、O	AMS4403 AMS4333 GBn223 ASME SB-247 ASTM B247M AMS22771 AMS4414 AMS4108
	Series 2、 6、 7	≤ 10000kg	F、 O、 T4、 T6、 T74、 T7452、 T852	
Die forgings	Series 5	≤ 2.5m ²	O、 F	
	Series 2、 6、 7	≤ 2.5m ²	F、 O、 T4、 T6、 T74、 T7452、 T852	
Forged rings	Series 2、 5、 7	Product dimension : Wall thickness: 50~400mm Height: max.900mm Outer diameter: φ100~6000mm	H112、 CS、 T74、 T7452、 T852	Q/SWA J8017-2008 Q/SWAJ8094-2010 Q/SWAJ8040-2012 Q/SWAJ8014-2011 S/SWA 14405-2007 GBn223-84 Q/SWAJ8024-2009 ASME SB-247 ASTM B247M



8.Special profiles

Variety	Alloy	Temper	Circumscribed Circle Diameter(mm)		Standard
			Min.	Max.	
Metro profiles	6005A、7005	T6	180	640	GB/T19347
High-speed train profiles	6005A、7005	T6	180	640	GB/T19347 DK42~DK44 (EN755)
Monorail profiles	6N01、7N01	T5	180	640	DGZ1 (JIS H4100)
Cylinder profiles	6063、6005A	T5	150	560	GB/T6892
Coal wagon profiles	6061	T6	330	620	AH100AJT1



LINSY Aluminum produces all kinds of aluminum alloy wire, and the product tolerance is very strict, the specification covers 0.5mm-20mm. Single roll weight according to customer requirements for production.

Among them, high-strength environmental protection and rust-proof aluminum alloy wire, widely used in high-voltage wire and cable, submarine cable and other industries.

The aluminum alloy wire produced by snow silver is also applied to produce all kinds of fasteners, semi hollow rivets. Rivets, screws, nuts and all kinds of high-end military, aviation, ship, automobile and other high-end areas. Products are sold all over the world.

1070



Serie Code	XY-S-120004
Size	1.0-8.0mm
Temper	H18
Size Tolerance	±0.02mm
Weight Coil	Above 50kg
Function	Round head solid rivet

2017



Serie Code	XY-S-120005
Size	3.0-10mm
Temper	T0
Size Tolerance	±0.02mm
Weight Coil	Above 50kg
Function	Round head solid rivet

2117



Serie Code	XY-S-120006
Size	3.0-10mm
Temper	T2
Size Tolerance	±0.02mm
Weight Coil	Above 50kg
Function	Round head solid rivet

1100



Serie Code	XY-S-120001
Size	1.0-15.0mm
Temper	H18
Size Tolerance	±0.02mm
Weight Coil	Above 50kg
Function	Semi-tubular rivet

1050A



Serie Code	XY-S-120002
Size	1.0-15.0mm
Temper	H18
Size Tolerance	±0.02mm
Weight Coil	Above 50kg
Function	Semi-tubular rivet

1350



Serie Code	XY-S-120003
Size	1.0-10.0mm
Temper	H18
Size Tolerance	±0.02mm
Weight Coil	Above 50kg
Function	Semi-tubular rivet

2024



Serie Code	XY-S-120007
Size	3.0-10.0mm
Temper	T0
Size Tolerance	±0.02mm
Weight Coil	Above 50kg
Function	High-strength screw rivet

2011



Serie Code	XY-S-120008
Size	3.0-10mm
Temper	T0
Size Tolerance	±0.02mm
Weight Coil	Above 50kg
Function	High-strength screw rivet

3003



Serie Code	XY-S-120009
Size	3.0-10.0mm
Temper	H14
Size Tolerance	±0.02mm
Weight Coil	Above 50kg
Function	Car brake rivet



5754



Serie Code	XY-S-120010
Size	19.5-21.5mm
Temper	T2
Size Tolerance	±0.02mm
Weight Coil	Above 500kg
Function	Car brake rivet

5052



Serie Code	XY-S-120011
Size	3.0-15.0mm
Temper	H14
Size Tolerance	±0.02mm
Weight Coil	Above 50kg
Function	Round head solid rivet

5051



Serie Code	XY-S-120012
Size	3.0-10.0mm
Temper	H18
Size Tolerance	±0.02mm
Weight Coil	Above 50kg
Function	Round head solid rivet

5154/5183



Serie Code	XY-S-120016
Size	3.0-15.0mm
Temper	H18
Size Tolerance	±0.02mm
Weight Coil	Above 50kg
Function	Blind rivet

6063



Serie Code	XY-S-120017
Size	3.0-30.0mm
Temper	T4
Size Tolerance	±0.02mm
Weight Coil	Above 50kg
Function	Cold-forged screw, nut

6061



Serie Code	XY-S-120018
Size	3.0-30.0mm
Temper	T2
Size Tolerance	±0.02mm
Weight Coil	Above 50kg
Function	Cold-forged screw, nut

5056/5083



Serie Code	XY-S-120013
Size	1.0-10.0mm
Temper	H32
Size Tolerance	±0.05mm
Weight Coil	Above 300kg
Function	high-strength solid rivet

5050



Serie Code	XY-S-120014
Size	3.0-15.0mm
Temper	H32
Size Tolerance	±0.02mm
Weight Coil	Above 50kg
Function	Blind rivet

5005



Serie Code	XY-S-120015
Size	3.0-15.0mm
Temper	H18
Size Tolerance	±0.02mm
Weight Coil	Above 50kg
Function	Blind rivet

6005/6013



Serie Code	XY-S-120019
Size	3.0-30.0mm
Temper	T4
Size Tolerance	±0.02mm
Weight Coil	Above 50kg
Function	Cold-forged screw, nut

6082



Serie Code	XY-S-120020
Size	3.0-15.0mm
Temper	T4
Size Tolerance	±0.02mm
Weight Coil	Above 50kg
Function	Cold-forged screw, nut

5A03



Serie Code	XY-S-120021
Size	0.8-30mm
Temper	H
Size Tolerance	±0.02mm
Weight Coil	Above 30kg
Function	Screw Rivet



7A02



Serie Code	XY-S-120022
Size	9.5
Temper	T6
Size Tolerance	±0.01mm
Weight Coil	Above 30kg
Function	Rivet pin with mandrel

7A01



Serie Code	XY-S-120023
Size	3.0
Temper	T6
Size Tolerance	±0.01mm
Weight Coil	Above 30kg
Function	Rivet pin with mandrel

6101



Serie Code	XY-S-120024
Size	3.0
Temper	T5
Size Tolerance	-0.02mm
Weight Coil	Above 50kg
Function	install rivets

7A04



Serie Code	XY-S-120028
Size	4.45
Temper	T6
Size Tolerance	-0.01mm
Weight Coil	Above 30kg
Function	Screw Rivet

1099



Serie Code	XY-S-120029
Size	1.0-15.0
Temper	H18
Size Tolerance	±0.02mm
Weight Coil	Above 50kg
Function	Install rivets

3004/3A21



Serie Code	XY-S-120030
Size	1.0-15.0
Temper	H18
Size Tolerance	±0.02mm
Weight Coil	Above 50kg
Function	Riveting

7075



Serie Code	XY-S-120025
Size	3.0-9.0
Temper	H18
Size Tolerance	±0.02mm
Weight Coil	Above 50kg
Function	High-strength solid rivet

7A03



Serie Code	XY-S-120026
Size	1.46-4.45
Temper	T6
Size Tolerance	±0.01mm
Weight Coil	Above 30kg
Function	Screw Rivet

7003/7004



Serie Code	XY-S-120027
Size	3.0-25
Temper	T6
Size Tolerance	-0.05mm
Weight Coil	Above 30kg
Function	Round head solid rivet

7A04



Serie Code	XY-S-120031
Size	1.0-15.0
Temper	H18
Size Tolerance	±0.02mm
Weight Coil	Above 50kg
Function	Riveting

1099



Serie Code	XY-S-120032
Size	1.0-15.0
Temper	H18
Size Tolerance	±0.02mm
Weight Coil	Above 50kg
Function	Riveting

3004/3A21



Serie Code	XY-S-120033
Size	1.0-15.0
Temper	T0
Size Tolerance	±0.02mm
Weight Coil	Above 50kg
Function	Riveting



Packing Method



Double Fiber Cloth Packing



Wooden Box Packing



Aluminum Bar Box Packing

6464



Serie Code	XY-S-120037
Size	1.0-15.0mm
Temper	T0
Size Tolerance	±0.02mm
Weight Coil	Above 50kg
Function	Screw and rivet production

6069



Serie Code	XY-S-120038
Size	1.0-15.0mm
Temper	H14
Size Tolerance	±0.02mm
Weight Coil	Above 50kg
Function	Riveting

7A09



Serie Code	XY-S-120039
Size	1.0-15.0mm
Temper	T2
Size Tolerance	±0.02mm
Weight Coil	Above 50kg
Function	Riveting

5A06/5B0



Serie Code	XY-S-120034
Size	1.0-15.0mm
Temper	T2
Size Tolerance	±0.02mm
Weight Coil	Above 50kg
Function	Riveting

6056



Serie Code	XY-S-120035
Size	3.0-30.0mm
Temper	T0-T9
Size Tolerance	±0.02mm
Weight Coil	50-100kg
Function	Lightweight Automotive Sleeve Nut Wire Rod

6065



Serie Code	XY-S-120036
Size	1.0-15.0mm
Temper	T0
Size Tolerance	±0.02mm
Weight Coil	Above 50kg
Function	Screw and rivet production

8011



Serie Code	XY-S-120040
Size	1.0-15.0mm
Temper	H14
Size Tolerance	±0.02mm
Weight Coil	Above 50kg
Function	Riveting

8003



Serie Code	XY-S-120041
Size	1.0-15.0mm
Temper	H18
Size Tolerance	±0.02mm
Weight Coil	Above 50kg
Function	Riveting

8036



Serie Code	XY-S-120042
Size	1.0-15.0mm
Temper	H18
Size Tolerance	±0.02mm
Weight Coil	Above 50kg
Function	Riveting



Linsy Aluminum specializes in the production of pure aluminum, aluminum magnesium, low silicon, high silicon, aluminum fierce welding wire. The surface of the wire is bright and smooth. It has good resistance to seawater corrosion, welding, polishing and wear resistance. It is suitable for all kinds of aluminum alloy home, bicycle, ship, aviation, automobile and so on.

Aluminum Wire Series Ski Composition And Model (Aws Standard)

Linsy Aluminum Wire Products Include: Pure Aluminum , Aluminum Magnesium, Aluminum Silicon, Aluminum And Other Full Range Of Aluminum Welding Materials

Products Can Be Customized According To Customer Needs: Straight, Plate Mounted, Such As Wire Rod

Grade	Si	Fe	Cu	Mn	Mg	Cr	Ni	Zn	Ti	Each	Total	Al
1070	0.2	0.25	0.04	0.03	0.03	/	/	0.04	0.03	0.3	/	The Rest
1100	0.95		0.05-0.2	0.05	/	/	/	0.1	/	0.05	0.15	The Rest
1188	0.06	0.06	0.005	1.0-1.5	0.01	/	/	0.03	0.01	0.01	/	The Rest
3003	0.6	0.7	0.05-0.2	0.05	/	/	/	0.1	/	0.05	0.15	The Rest
4043	4.5-6.0	0.8	0.3	0.02	0.02	/	/	0.1	0.2	0.05	0.15	The Rest
4047	11.0-13.0	0.8	0.3	0.15	0.1	/	/	0.2	0.15	0.05	0.15	The Rest
4145	9.3-10.7	0.8	3.3-4.7	0.15	0.15	0.15	/	0.2	/	0.05	0.15	The Rest
5154	0.25	0.4	0.1	0.1	3.1-3.8	0.15-0.35	/	0.2	0.2	0.05	0.15	The Rest
5183	0.3	0.3	0.03	0.5-1.0	4.5-5.1	0.05	0.03	0.1	0.03	0.05	0.15	The Rest
5356	0.25	0.4	0.1	0.05-0.2	4.5-5.5	0.05-0.2	/	0.1	0.5-0.2	0.05	0.15	The Rest
5454	0.25	0.4	0.1	0.5-1.0	2.4-3.0	0.05-0.2	/	0.25	0.2	0.05	0.15	The Rest
5554	0.25	0.4	0.1	0.5-1.0	2.4-3.0	0.05-0.2	/	0.25	0.05-0.2	0.05	0.15	The Rest
5754	0.4	0.4	0.1	0.5	2.6-3.6	0.3	/	0.2	0.15	0.05	0.15	The Rest



Recommended Matching Data For Aluminium Welding

Original material	Welding material
1350	ER1788
1060	ER118
1100	ER1100
2014	ER4043
3003	ER4043
5005	ER5356
5025	ER5356
5083	ER5183
5086	ER5356
5454	ER5554
6061	ER5356
6063	ER5356
6070	ER4643
7005	ER5356
7039	ER5183
1350	ER1188
1350	ER1188

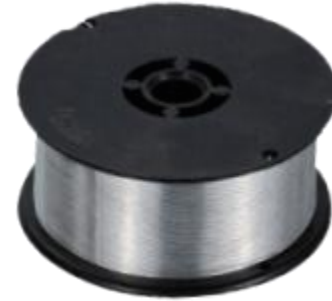


Welding Matters Needing Attention

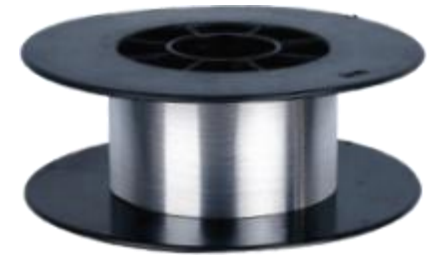
Before welding, the base metal should be prevented from producing oxide film on the surface of the base metal to affect the effect of welding.

Because the melting temperature of alumina is as high as thousands of degrees Celsius, if there is alumina component in the base metal before welding, it is very likely to form welding defects during welding.

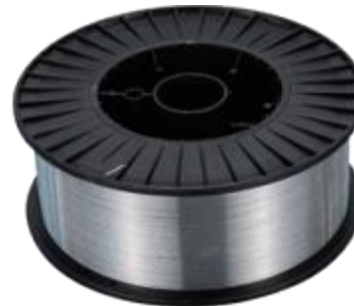
Welding wire should be stored in a suitable room, and the desiccant should be stored in it, so as not to damp the welding wire in the air and affect the welding effect.



Alloy	Size	Spool	Spool Ala
1100	0.8-1.2mm	0.5kg	100×20×45mm
3003	0.8-1.2mm	0.5kg	100×20×45mm
4043	0.8-1.2mm	0.5kg	100×20×45mm
4047	0.8-1.2mm	0.5kg	100×20×45mm
5356	0.8-1.2mm	0.5kg	100×20×45mm
5183	0.8-1.2mm	0.5kg	100×20×45mm



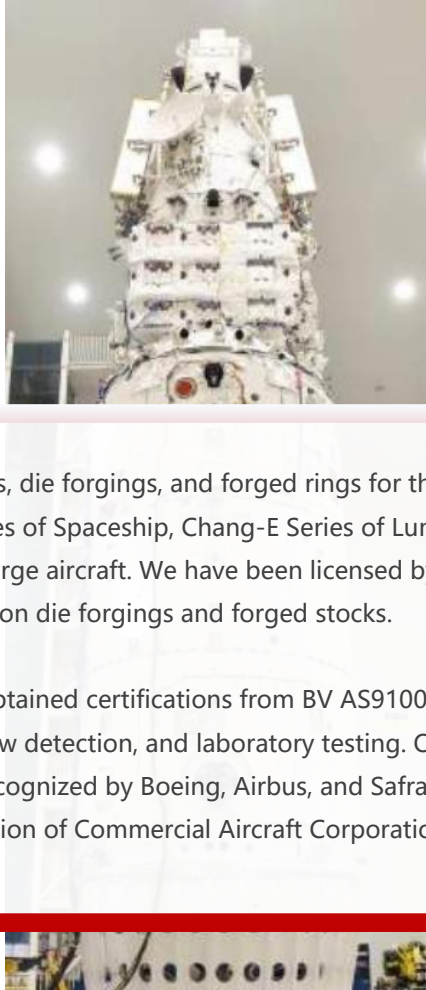
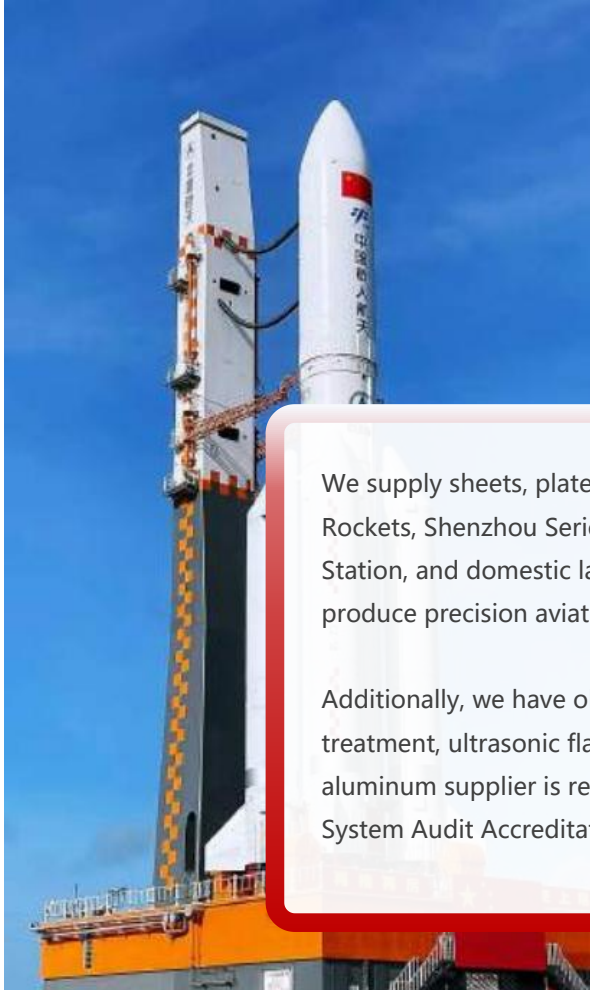
Alloy	Size	Spool	Spool Ala
1100	0.8-1.6mm	2kg	200×52×70mm
4043	0.8-1.6mm	2kg	200×52×70mm
4047	0.8-1.6mm	2kg	200×52×70mm
5356	0.8-1.6mm	2kg	200×52×70mm
5556	0.8-1.6mm	2kg	200×52×70mm



Alloy	Size	Spool	Spool Ala
1100	0.8-1.6mm	7kg	270×52×108mm/ 300×52×108mm
4043	0.8-1.6mm	7kg	270×52×108mm/ 300×52×108mm
5356	0.8-1.6mm	7kg	270×52×108mm/ 300×52×108mm



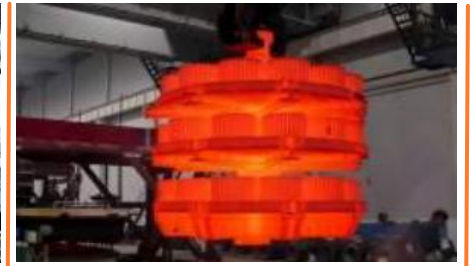
Alloy	Size	length	Package
1100	1.6-6.0mm	1.0-1.2 m / pc	5kg/ bundle、 10-20kg/ Carton
2319	1.6-6.0mm	1.0-1.2 m / pc	5kg/ bundle、 10-20kg/ Carton
3003	1.6-6.0mm	1.0-1.2 m / pc	5kg/ bundle、 10-20kg/ Carton
4043	1.6-6.0mm	1.0-1.2 m / pc	5kg/ bundle、 10-20kg/ Carton
4047	1.6-6.0mm	1.0-1.2 m / pc	5kg/ bundle、 10-20kg/ Carton
4145	1.6-6.0mm	1.0-1.2 m / pc	5kg/ bundle、 10-20kg/ Carton
5356	1.6-6.0mm	1.0-1.2 m / pc	5kg/ bundle、 10-20kg/ Carton
5183	1.6-6.0mm	1.0-1.2 m / pc	5kg/ bundle、 10-20kg/ Carton
5554	1.6-6.0mm	1.0-1.2 m / pc	5kg/ bundle、 10-20kg/ Carton
5556	1.6-6.0mm	1.0-1.2 m / pc	5kg/ bundle、 10-20kg/ Carton
5754	1.6-6.0mm	1.0-1.2 m / pc	5kg/ bundle、 10-20kg/ Carton



Aluminum forged wing beam



Aluminum forged ring



Aeronautical structural components

We supply sheets, plates, die forgings, and forged rings for the Long March Series of Rockets, Shenzhou Series of Spaceship, Chang-E Series of Lunar Probe, Tiangong Space Station, and domestic large aircraft. We have been licensed by Boeing, U.S.A to produce precision aviation die forgings and forged stocks.

Additionally, we have obtained certifications from BV AS9100 and PRI Nadcap for heat treatment, ultrasonic flaw detection, and laboratory testing. Our status as an aviation aluminum supplier is recognized by Boeing, Airbus, and Safran. Passed the Quality System Audit Accreditation of Commercial Aircraft Corporation of China Ltd. (COMAC).





Oceangoing ship



LNG storage vessel



Offshore drilling platforms



Hydrofoil craft



Obtained the ratification and certificates from American Bureau of Shipping, BV, France, Det Norske Veritas, Lloyd's Register of Shipping China Ship Classification Society.



C80 Convertible coal truck



Truck fuel tank



Fire engine



Fuel tank car



Aluminum materials for wagon constructions, windows and doors, Goods shelves of metro rolling stocks and trains, auto body panels hubs, air conditioners, passenger ship decks and windows and doors.



Notebook computer

Portable battery

Mobile phone

Digital camera

Gas water heater

Smoke machine cover

Refrigerator outer panel

Household electrical appliances



Shanghai Real Estate



Guangzhou Tianhe Building



Shenzhen Metro



Hongkong pacific Building



Beijing Chaoyang CBD Building



Shenzhen Wanxiang Building





— Partner company



Shenzhen Linsy Aluminum



Email: david@linsyaluminum.com

Mobile/Whatsapp: +86 181 2470 3776

Add: Floor 7, Xinan Commercial Building, Shenzhen City, China, 518101

Dongguan Factory address: Building B, No.1, Zhenan Road, Changan County, Dongguan city, Guangdong Province, China, 523850